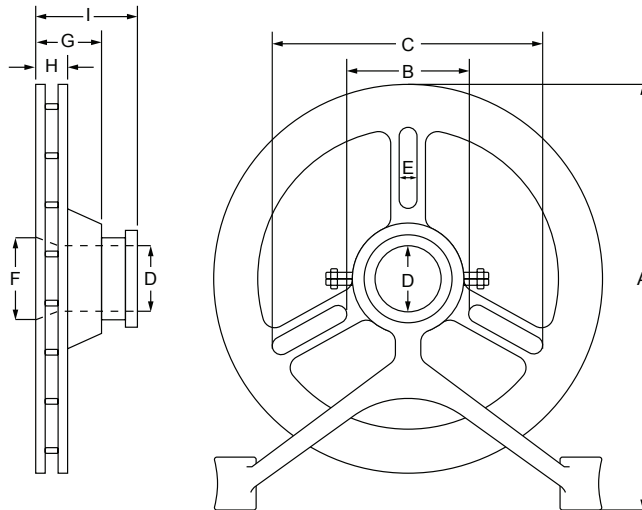




Job Name:	
Job Location:	
Engineer:	
Contractor:	
Tag:	
PO#:	
Rep:	
Wholesale Dist.:	

DIMENSIONS

CHAINWHEEL DIMENSIONS IN. (CM.)								
WHEEL SIZE #	1.5	2	2.5	3	3.5	4	4.5	5
A - Overall Height	7-3/4 (19.69)	10-1/2 (26.67)	12-1/2 (31.75)	15-1/2 (39.37)	18-1/2 (46.99)	21-1/2 (54.61)	25-3/4 (65.41)	30-1/4 (76.84)
B - Inner Bolt Circle	3-1/2 (8.89)	4-1/2 (11.43)	5-1/2 (13.97)	8-1/2 (21.59)	11-1/2 (29.21)	11-1/2 (29.21)	14-1/2 (36.83)	18-3/4 (47.63)
C - Outer Bolt Circle	5 (12.70)	6-5/8 (16.83)	9-1/4 (23.50)	12-3/8 (31.43)	15-1/2 (39.37)	17-3/4 (49.05)	21-1/4 (53.98)	25-1/4 (65.14)
D - Hub Opening (Diameter)	7/8 (2.22)	2-1/8 (5.40)	2-1/8 (5.40)	2-1/8 (5.40)	3 (7.62)	3 (7.62)	3 (7.62)	3 (7.62)
E - Slot Size (Width)	3/8 (.95)	3/8 (.95)	7/16 (1.11)	7/16 (1.11)	7/16 (1.11)	5/8 (1.59)	5/8 (1.59)	5/8 (1.59)
F - Rear Opening	1-7/8 (4.76)	3-1/8 (7.94)	3-1/2 (8.89)	3-1/2 (8.89)	4-7/8 (12.38)	4-7/8 (12.38)	4-5/8 (11.75)	4-3/4 (12.07)
G - Hub Depth (Shoulder to Rear)	1-7/16 (3.65)	1-3/8 (3.49)	1-3/4 (4.45)	1-7/8 (4.76)	1-7/8 (4.76)	1-7/8 (4.76)	1-7/8 (4.76)	2 (5.08)
H - Rim Thickness	1-1/8 (2.86)	1-1/8 (2.86)	1-1/4 (3.18)	1-1/4 (3.18)	1-1/4 (3.18)	1-1/2 (3.81)	1-1/2 (3.81)	1-1/2 (3.81)
I - Overall Depth	2-3/8 (6.03)	2-3/8 (6.03)	2-5/8 (6.67)	3-1/8 (7.94)	3-1/8 (7.94)	3-1/8 (7.94)	3-1/8 (7.94)	3-1/8 (7.94)



SELECTION OF CHAINWHEEL OPERATORS

PART NO.	VALVE HANDWHEEL OUTSIDE DIAMETER RANGE IN. (CM.)	CHAIN OPERATOR NUMBER	WHEEL OUTSIDE DIAMETER IN. (CM.)	USES CHAIN TRADE SIZE	STANDARD WHEEL WEIGHT (LB.)
H407900	4-1/4 to 5-3/4 (10.80 - 14.61)	#1.5 w/Special Backplate	5-3/4 (14.61)	1/0	4
H300100	7-3/4 to 9 (19.69 - 22.86)	#2	9 (22.86)	1/0	10
H300200	9-1/4 to 12-1/2 (23.50 - 31.75)	#2.5	12 (30.48)	4/0	15
H299100	12-3/4 to 15-1/2 (32.39 - 39.37)	#3	15-1/2 (39.37)	4/0	18
H299200	15-3/4 to 19 (40.01 - 48.26)	#3.5	18-1/2 (46.99)	4/0	28
H300300	19-1/4 to 22 (48.90 - 55.88)	#4	21-1/2 (54.61)	5/0	37
H300400	22-1/2 to 26 (57.16 - 66.04)	#4.5	25-3/4 (64.41)	5/0	47
H300500	26-1/4 to 30 (66.68 - 76.20)	#5	30 (70.20)	5/0	58
H363400	30-1/4 to 36 (76.20 - 91.44)	#5**	30 (70.20)	5/0	58

**Special attachment clamps for #5 wheel will accommodate up to 36" valve handwheel

STEP 1



Pass a slotted bolt through the top slot of the chainwheel and pass the bolt through the long L strap. Hang the chainwheel on the valve hand wheel with the long L strap on the top (12 o'clock).

STEP 2



Fasten the adjustable clamp to valve hand wheel using the short L-Strap, a bolt, and a nut. Pass the bolt from Step 1 through the short L-Strap and fasten with a nut.

STEP 3



Put a washer (if included) on a bolt, pass the bolt through one of the two remaining slots in the chainwheel from the front. Pass through both sides of the U-Strap and fasten loosely with a lock washer (if included) and nut.

Repeat to fasten the remaining U-Strap using the final chainwheel slot.

STEP 4



Center the chainwheel and tighten all nuts securely.

STEP 1



Pass a slotted bolt through the top slot of the chainwheel and pass the bolt through the long L-Strap. Hang the chainwheel on the valve hand wheel with the long L-Strap on the top (12 o'clock).

STEP 2



Fasten the adjustable clamp to valve hand wheel using the short L-Strap, a bolt, and a nut. Pass the bolt from Step 1 through the short L-Strap and fasten with a nut.

STEP 3



Repeat Steps 1 and 2 to loosely secure the two remaining adjustable clamps on the remaining chainwheel slots.

STEP 4



Center the chainwheel and tighten all nuts securely.

Apollo Chainwheel Selection Guide

Series	Description	Valve Size	Handwheel size (in.)	Chainwheel Operator Part #	Chain Trade Size*
6P	Cast Iron Flanged Ball Valve	8"-10"	17.9	H299200	4/0
141, 145, 149	Resilient Seated Iron Butterfly Valves	2" - 24"	11.9	H300200	4/0
		30"-36"	15.7	H299200	4/0
215 (8T)	High Performance Butterfly 150# - RTFM Seats	2" - 6"	5.9	H407900	1/0
		8"-12"	11.81	H300200	4/0
		14"-20"	15.75	H299200	4/0
		30"-36"	24	H300400	5/0
215 (2F & 2M)	High Performance Butterfly 150# - Fire Safe & Metal Seat Options	2"-6"	5.9	H407900	1/0
		8" - 10"	11.81	H300200	4/0
		12" - 20"	15.75	H299200	4/0
		24"	24	H299200	4/0
230 (8T)	High Performance Butterfly 300# - RTFM Seats	2" - 4"	5.9	H407900	1/0
		5"-10"	11.81	H300200	4/0
		12"-18"	15.75	H299200	4/0
		20"-24"	24	H300400	5/0
230 (2F & 2M)	High Performance Butterfly 300# - Fire Safe & Metal Seat Options	2" - 4"	5.9	H407900	1/0
		5"-8"	11.81	H300200	4/0
		10"-16"	15.75	H299200	4/0
		18"-24"	24	H300400	5/0
260 (8T)	High Performance Butterfly 600# - RTFM Seats	3"	5.9	H407900	1/0
		4"-6"	11.81	H300200	4/0
		8"-12"	15.75	H299200	4/0
260 (2F & 2M)	High Performance Butterfly 600# - Fire Safe & Metal Seat Options	3"	5.9	H407900	1/0
		4"	11.81	H300200	4/0
		6"-10"	15.75	H299200	4/0
		12"	24	H300400	5/0
6GA (610F & 620F NRS Only)	Cast Iron Gate Valves Metal Seated to MSS-SP70	2 & 2-1/2"	7.01	NA	
		3"	7.78	H300100	1/0
		4"	10	H300200	4/0
		5"-6"	11.81	H300200	4/0
		8"	13.7	H299100	4/0
		10"	15.75	H299200	4/0
		12"	17.99	H299200	4/0
		14"	20	H300300	5/0
		16"	21.97	H300300	5/0
		18"	24.02	H300400	5/0
		20"	25.2	H300400	5/0
	24"	30	H300500	5/0	

* Reference only - Chain to be supplied by customer.

rev. 5/28/2019